

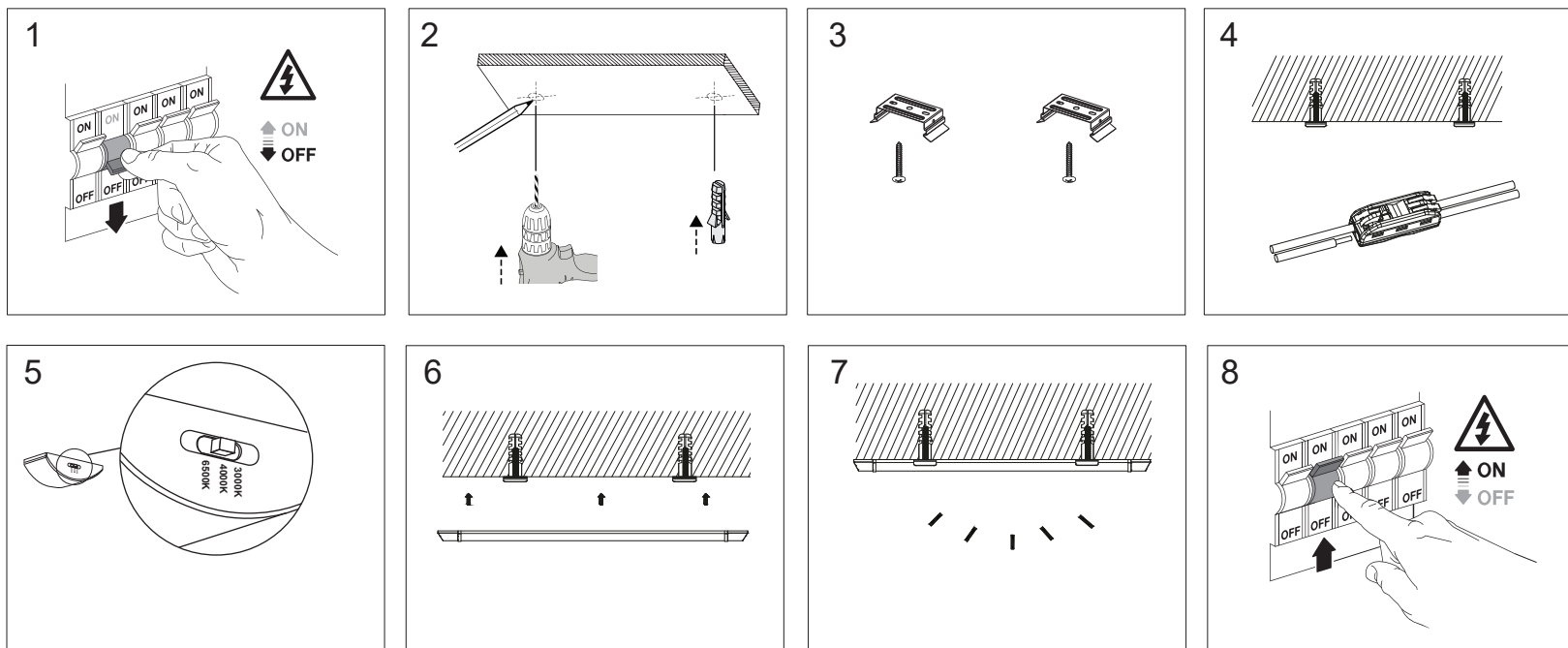
paul russells® TRI COLOUR LED BATTEN

Please read these instructions before installation and keep this manual for future reference.

1. This luminaire is suitable for indoor use only.
2. Installation must be carried out by a qualified electrician or technician.
3. We cannot be held liable for any issues that may arise due to improper installation.
4. Before starting installation or performing maintenance, ensure the electricity supply is switched off at the mains.
5. Under no circumstances should the luminaire be covered with insulation material.

6. Any broken or damaged parts should be replaced as soon as possible.
7. Dispose of electrical and electronic equipment properly; do not dispose of it with household waste. It needs to be treated and recovered correctly.


INSTALLATION INSTRUCTIONS



1. Switch off the power during installation.
2. Choose the desired position and then proceed to drill two holes. Insert wall plugs into the drilled holes.
3. Screw the mounting clips into the ceiling or wall. Use additional Mounting clips if needed.
4. Connect the batten to the mains using either a waterproof connector or a welding clamp.

5. Use the DIP switch located on the side of the batten to adjust the colour temperature. Select from 3000K (Warm), 4000K (Cool), or 6500K (Day) to suit your preference.
6. Firmly press the lamp body onto the mounting clips until it clicks into place. If necessary, adjust the position by sliding the lamp body along the clips.
7. Installation is now complete.
8. Turn on the power supply.

Code	Wattage	Dimension	Colour Temp	Lumens	CRI	IP	Class	Lifetime
18674	40	1169x76mm	3000-4000-6000K	4800	80	IP20	E	25000Hrs
18681	50	1469x76mm	3000-4000-6000K	6000	80	IP20	E	25000Hrs
18698	60	1803x76mm	3000-4000-6000K	7200	80	IP20	E	25000Hrs

 This marking indicates that this product should not be disposed of with other household waste through out the UK and EU. To prevent potential harm to the environment or human health from uncontrolled waste disposal, please recycle it responsibly to encourage sustainable reuse of material resources.

