

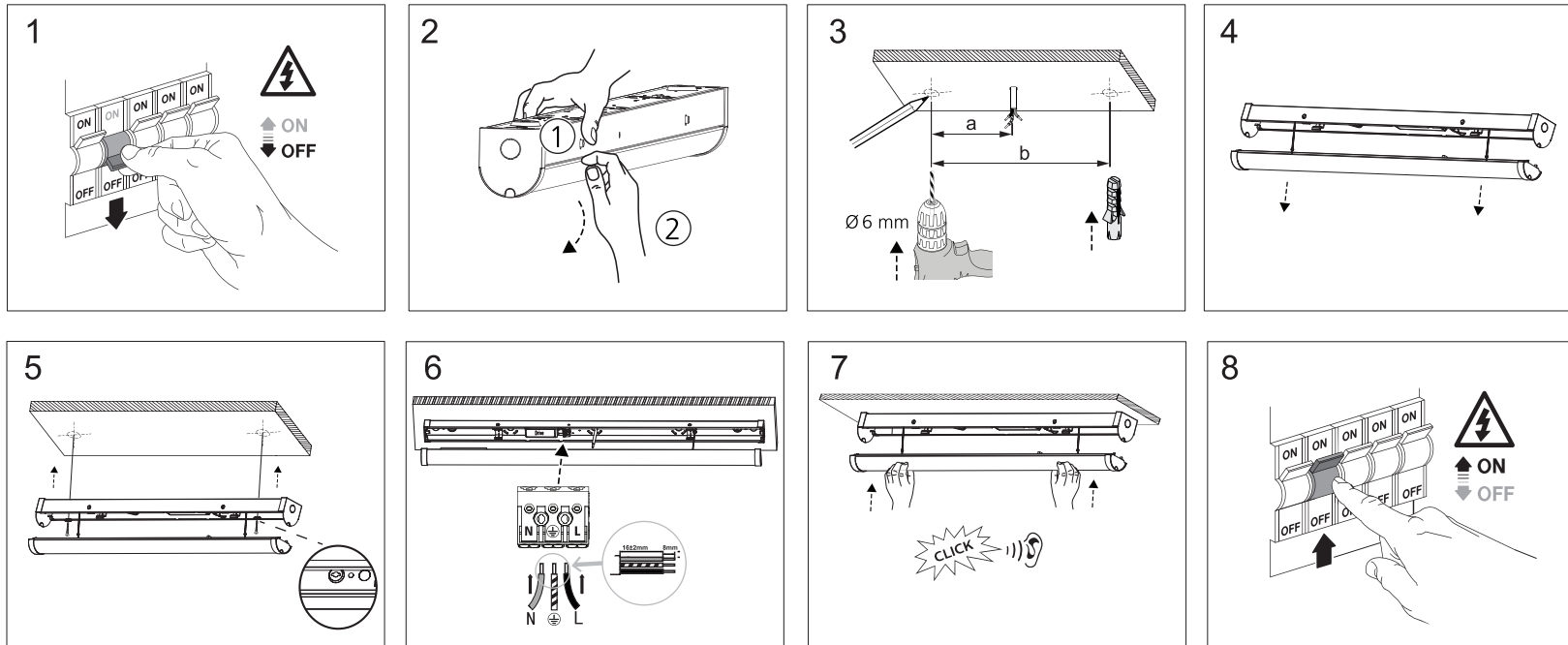
# paul russells® LED BATTEN LIGHT

Please read these instructions before installation and keep this manual for future reference.

1. This luminaire is suitable for indoor use only.
2. Installation must be carried out by a qualified electrician or technician.
3. We cannot be held liable for any issues that may arise due to improper installation.
4. Before starting installation or performing maintenance, ensure the electricity supply is switched off at the mains.
5. Under no circumstances should the luminaire be covered with insulation material.

6. Any broken or damaged parts should be replaced as soon as possible.
7. Dispose of electrical and electronic equipment properly; do not dispose of it with household waste. It needs to be treated and recovered correctly.

## INSTALLATION INSTRUCTIONS



1. Switch off the power during installation.

2. To remove the diffuser and LED tray from the fitting, press the side release buttons, as shown in the illustration in Fig.2

3. Choose the desired position and then proceed to drill two holes. Insert wall plugs into the drilled holes.

4. The diffuser and LED tray are secured to the body with safety tabs, which provide support for the diffuser during the installation of the fitting.

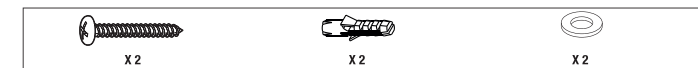
5. Secure the fitting in the desired position using the fixing points.

6. Connect the wires into the fast-connect terminal, ensuring they are securely and properly inserted.

7. Reattach the front cover by aligning the diffuser with the body and pressing it firmly into place until it clicks

8. Turn on the Power supply.

Code	Wattage	Dimension	Colour Temp	Lumens	CRI	IP	IK	Lifetime
18544	82	1828x70mm	4000K	9840	80	IP20	IK08	50000Hrs



This marking indicates that this product should not be disposed of with other household waste through out the UK and EU. To prevent potential harm to the environment or human health from uncontrolled waste disposal, please recycle it responsibly to encourage sustainable reuse of material resources.

Provided that proper care and usage are adhered to, the paul russells Guarantee promises to replace, exchange, or refund any product that fails due to faulty workmanship or materials. This guarantee does not extend to damages caused by accidents or misuse and is in addition to your statutory rights. Should any defects due to faulty workmanship or materials arise within twelve months from the date of purchase, kindly return the goods along with proof of purchase to the retailer. To be eligible for the extended guarantee, please visit [www.paulrussells.com](http://www.paulrussells.com) and register your product within 30 days of purchase.