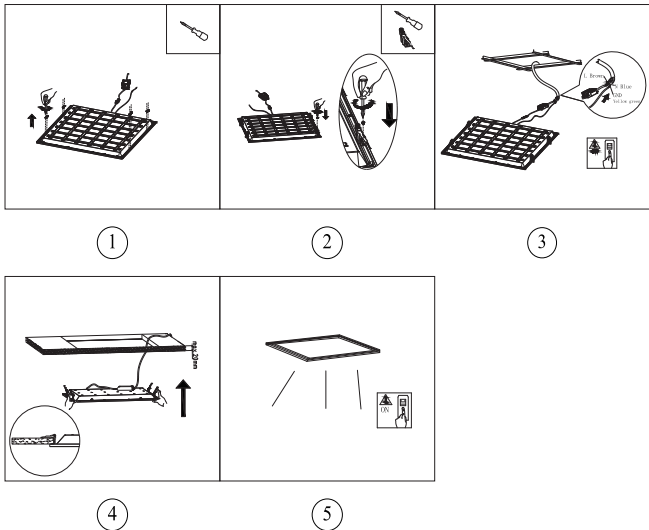
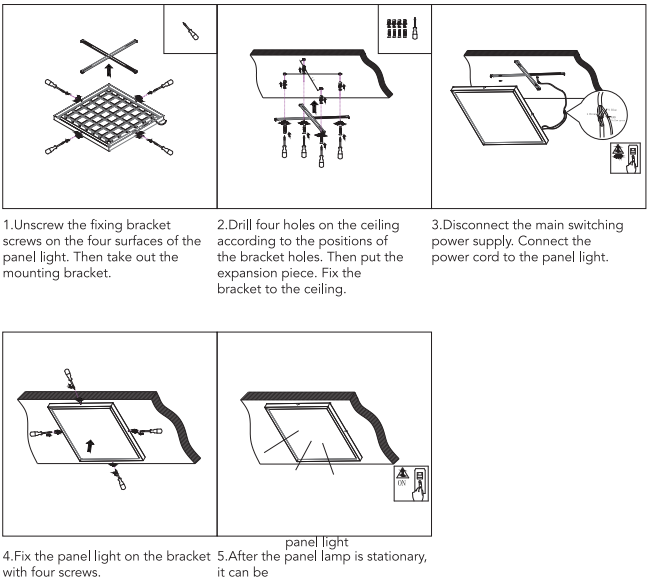


C.Spring snap installation method



Accessories need to be purchased separately

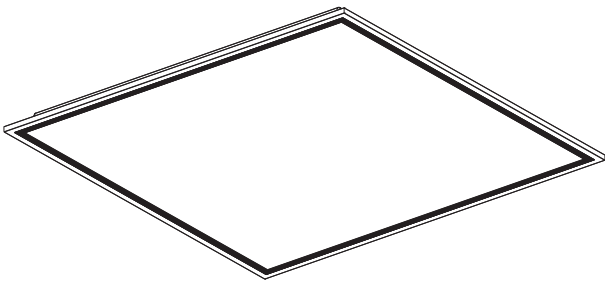
D.Surface installation method



www.paulrussells.com

paul russells®

ULTRA SLIM
LED PANEL LIGHT



*This product defaults to Ceiling Mounted Installation, if you need other installation methods, please purchase additional accessories, thank you!

www.paulrussells.com

Product Parameter:

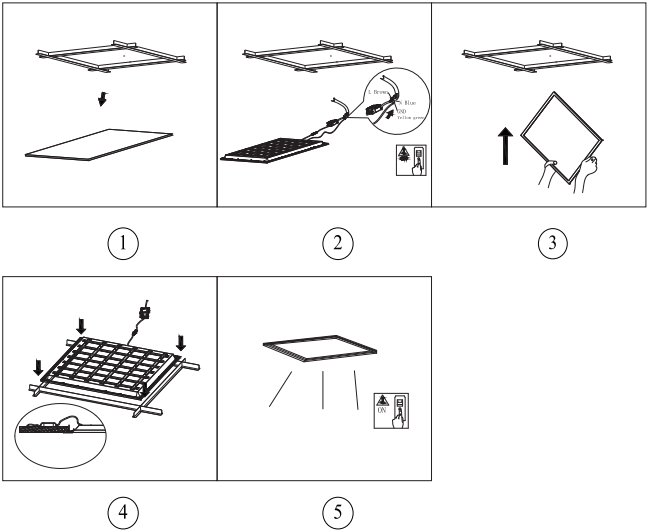
Item No: P001-S
Power: 40W
Input Voltage: AC 220-240V 50/60Hz
PF: ≥ 0.9
CRI: ≥80
Beam Angle: 90°
Ta: -20C ~+40 C
Life Time: 50,000hrs

Cautions:

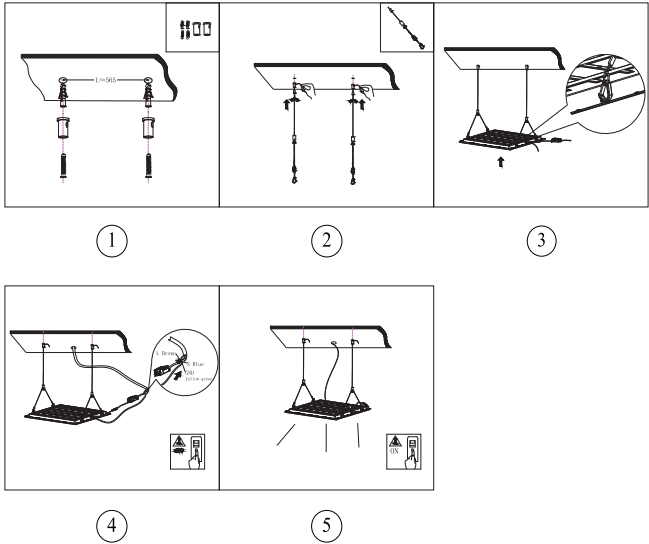
- 1.Please read these instructions carefully before installation
- 2.Installation must be carried out by a qualified electrician or technician.
- 3.Switch off the power during the installation.
- 4.This panel light is for indoor use only.
- 5.If you have any uncertainty about this panel light please get advice from a qualified electrician.

POWER (W)	DIMENSION (MM)	CUT-OUT(MM)
40W	595x595x35mm	585x585mm

A.Ceiling Mounted Installation



B.Hanging Installation



Accessories need to be purchased separately